

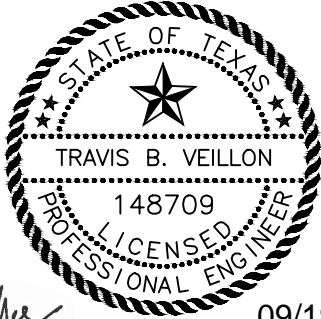
BID TABULATION FOR:

CONSTRUCTION OF HARVEST GREEN DRAINAGE, DETENTION AND MASS GRADING PHASE VII
FORT BEND COUNTY MUNICIPAL UTILITY DISTRICT NO. 134F
CITY OF HOUSTON E.T.J., FORT BEND COUNTY, TEXAS
SEPTEMBER 19, 2024
LJA ENGINEERING, INC.
E. MURPHY
SEPTEMBER 19, 2024
2659-2112 (9.2)

BID OPENING DATE:
BID OPENING LOCATION:
TABULATION BY:
TABULATION DATE:
LJA JOB NO.

BIDDER'S NAME	TOTAL AMOUNT BID	BID INCLUDING ALTERNATE ITEMS #1
1) LONGHORN EXCAVATORS, INC.	\$3,669,237.99	\$14,864,721.51
2) HARRIS CONSTRUCTION COMPANY, LLC	\$3,718,763.60	\$12,061,551.80
3) SONORA CONSTRUCTION	\$3,896,209.20	\$18,473,661.70
4) R CONSTRUCTION CIVIL, LLC	\$3,995,000.60	\$14,401,059.00

CALENDAR DAYS 140/150



Travis Veillon

09/19/2024

I, Travis Veillon, P.E., hereby certify these bid tabulations to be true and correct.

LJA Engineering, Inc.

BID TABULATION FOR:

BID OPENING DATE:
BID OPENING LOCATION:
TABULATION BY:
TABULATION DATE:
LJA JOB NO.

CONSTRUCTION OF HARVEST GREEN DRAINAGE, DETENTION AND MASS GRADING PHASE VII
 FORT BEND COUNTY MUNICIPAL UTILITY DISTRICT NO. 134F
 CITY OF HOUSTON E.T.J., FORT BEND COUNTY, TEXAS
 SEPTEMBER 19, 2024
 LJA ENGINEERING, INC.
 E. MURPHY
 SEPTEMBER 19, 2024
 2659-2112 (9.2)

ITEM	DESCRIPTION	UNIT	QTY	1) LONGHORN EXCAVATORS, INC.		2) HARRIS CONSTRUCTION COMPANY, LLC		3) SONORA CONSTRUCTION	
				UNIT COST	TOTAL COST	UNIT COST	TOTAL COST	UNIT COST	TOTAL COST
MASS GRADING ITEMS									
1	EXCAVATION OF POND A, EXCAVATION OF FILL AREAS, RIGHT OF WAY SWALES, V-BOTTOM SWALES, AND STRIPPINGS, INCLUDES THE USE OF WHEELED EQUIPMENT FOR EXCAVATION OF WETLAND AREAS AS SHOWN ON PLANS, STOCKPILING OF STRIPPINGS, AND REAPPLYING STRIPPINGS TO FINAL GRADED AREAS, COMPLETE IN PLACE	CY	448537	\$1.50	\$672,805.50	\$1.40	\$627,951.80	\$2.10	\$941,927.70
2	EMBANKMENT OF FILL AREA 1, FILL AREA 2, INCLUDES RIGHT OF WAY SWALES, V-BOTTOM SWALES, SITE AND FILL AREAS, INCLUDES HAULING, COMPACTION TO 95% STANDARD PROCTOR DENSITY, STRIPPING, STOCKPILING OF STRIPPINGS, DEMUCKING OF EXISTING SWALES AND PONDS IN FILL AREA AND REAPPLYING OF STRIPPINGS, COMPLETE IN PLACE	CY	448537	\$2.04	\$915,015.48	\$1.40	\$627,951.80	\$2.50	\$1,121,342.50
3	INSTALLATION OF 2' THICK CLAY LINER FOR POND A, FROM BOTTOM OF POND TO 2 FEET ABOVE NORMAL POOL ELEVATION, MANIPULATION OF EXISTING CLAY MATERIAL WITHIN POND BOTTOM AND SIDES FOR CONSTRUCTION OF CLAY LINER, MOISTURE CONDITIONING BY SCARIFYING TO A MINIMUM DEPTH OF 24", BENCHED AND COMPACTED TO 95% STANDARD PROCTOR DENSITY, HAULING, PLACING, AND COMPACTING CLAY MATERIAL, ALL FILL PLACED SHALL BE NON-DISPERSIVE CLAY MATERIAL WITH A MINIMUM PI OF 20 AND MAXIMUM OF 35, AND COMPACTION TO 95% STANDARD PROCTOR DENSITY, COMPLETE IN PLACE	SY	145000	\$2.46	\$356,700.00	\$2.35	\$340,750.00	\$1.33	\$192,850.00
4	DRY APPLICATION SEEDING OF DETENTION POND A FROM HIGH BANK TO NORMAL POOL ELEVATION, INCLUDES SEEDING, MOWING, AND WATERING TO ACHIEVE 90% HOMOGENEOUS VEGETATION TO ACCEPT PROJECT FOR FINAL PAYMENT, COMPLETE IN PLACE	AC	11	\$3,600.00	\$39,600.00	\$3,650.00	\$40,150.00	\$2,650.00	\$29,150.00
5	BROADCAST SEEDING OF FILL AREA 1, FILL AREA 2, 20' BOTTOM WIDTH SWALES WITHIN FUTURE RIGHT-OF-WAY, AND ALL REMAINING DISTURBED AREAS WITHIN PROJECT AREA, INCLUDES SEEDING, MOWING, AND WATERING TO ACHIEVE 90% HOMOGENEOUS VEGETATION TO ACCEPT PROJECT FOR FINAL PAYMENT, COMPLETE IN PLACE	AC	67	\$750.00	\$50,250.00	\$1,200.00	\$80,400.00	\$400.00	\$26,800.00
6	HYDROMULCH SEEDING OF INTERCEPTOR SWALES AND MAINTENANCE BERMS, GRADING DOWN TO NATURAL GROUND ALONG THE BOUNDARY, AND 4' BOTTOM WIDTH SWALE, INCLUDES SEEDING, MOWING, AND WATERING TO ACHIEVE 90% HOMOGENEOUS VEGETATION TO ACCEPT PROJECT FOR FINAL PAYMENT, COMPLETE IN PLACE	AC	7	\$3,000.00	\$21,000.00	\$3,200.00	\$22,400.00	\$1,900.00	\$13,300.00
7	DEWATERING (GROUNDWATER CONTROL) TO COMPLETE THE CONSTRUCTION OF POND A, INCLUDES CONVENTIONAL VACUUM-TYPE WELL POINTS, INTERNAL SUMPS AND PUMPS, OR ANY TYPE OF PUMPING NECESSARY TO COMPLETE THE CONSTRUCTION OF THE PROJECT, (TO BE USED ONLY AT THE WRITTEN DIRECTION OF THE ENGINEER), COMPLETE IN PLACE	AC	42	\$1,500.00	\$63,000.00	\$11,000.00	\$462,000.00	\$1,200.00	\$50,400.00
8	SURFACE WATER CONTROL, INCLUDES PUMPING REQUIRED TO CONSTRUCT POND A, AND COMPLETE ENTIRE PROJECT, (TO BE USED ONLY AT THE WRITTEN DIRECTION OF THE ENGINEER), COMPLETE IN PLACE	LS	1	\$6,900.00	\$6,900.00	\$10,000.00	\$10,000.00	\$50,000.00	\$50,000.00
9	CONSTRUCTION STAKING TO BE PERFORMED BY GBI SURVEY, PLEASE CONTACT KYLE KACAL AT 281.499.4539, INCLUDES STAKING OFFSETS TO FUTURE POND A, HIGH BANKS WITH CUT TO TOE OF POND NOT TO EXCEED 100', STAKING OF RCP, BACK SLOPE INTERCEPTOR STRUCTURES, AND ANY REMAINING STRUCTURES, COMPLETE IN PLACE	LS	1	\$36,900.00	\$36,900.00	\$29,100.00	\$29,100.00	\$29,100.00	\$29,100.00
10	AS-BUILT SURVEY OF FILL AREA 1, FILL AREA 2, POND A, AND ALL SWALES AND BACKSLOPE INTERCEPTOR SWALES, CONTRACTOR'S SURVEYOR TO PROVIDE TOPOGRAPHIC SURVEY SEALED BY A TEXAS-REGISTERED SURVEYOR, GRID SPACING SHALL BE 100' MAXIMUM AND INCLUDES ALL HIGH BANKS, BACK OF LOTS, GRADE BREAKS, FLOW LINES, GRADING FEATURES, UTILITY FLOWLINES, AND STRUCTURES IN A 3D CAD FILE FORMAT, TO BE PERFORMED BY GBI SURVEY, PLEASE CONTACT KYLE KACAL AT 281.499.4539, COMPLETE IN PLACE	LS	1	\$27,900.00	\$27,900.00	\$20,900.00	\$20,900.00	\$20,900.00	\$20,900.00

BID TABULATION FOR:

BID OPENING DATE:
BID OPENING LOCATION:
TABULATION BY:
TABULATION DATE:
LJA JOB NO.

CONSTRUCTION OF HARVEST GREEN DRAINAGE, DETENTION AND MASS GRADING PHASE VII
 FORT BEND COUNTY MUNICIPAL UTILITY DISTRICT NO. 134F
 CITY OF HOUSTON E.T.J., FORT BEND COUNTY, TEXAS
 SEPTEMBER 19, 2024
 LJA ENGINEERING, INC.
 E. MURPHY
 SEPTEMBER 19, 2024
 2659-2112 (9.2)

ITEM	DESCRIPTION	UNIT	QTY	1) LONGHORN EXCAVATORS, INC.		2) HARRIS CONSTRUCTION COMPANY, LLC		3) SONORA CONSTRUCTION	
				UNIT COST	TOTAL COST	UNIT COST	TOTAL COST	UNIT COST	TOTAL COST
11	EXCAVATION OF INTERCEPTOR SWALES FOR POND A, INCLUDES STRIPPING, STOCKPILING OF STRIPPINGS, AND REAPPLYING STRIPPINGS TO FINAL GRADED AREAS, COMPLETE IN PLACE	LF	8555	\$3.00	\$25,665.00	\$3.00	\$25,665.00	\$5.00	\$42,775.00
12	REMOVAL AND OFFSITE DISPOSAL OF EXISTING PIPES, ALL SIZES, ALL DEPTHS, ALL MATERIALS, INCLUDES REMOVAL OF SLOPE PAVING, RIP RAP, SAFETY END TREATMENTS AND APPURTENANCES, COMPLETE IN PLACE	LF	175	\$90.00	\$15,750.00	\$14.00	\$2,450.00	\$72.00	\$12,600.00
13	REMOVE AND REPLACE EXISTING IRRIGATION GATE VALVES, ALL SIZES, ALL DEPTHS, ALL MATERIALS, INCLUDES APPURTENANCES, (TO BE USED ONLY AT THE WRITTEN DIRECTION OF THE ENGINEER), COMPLETE IN PLACE	EA	2	\$165.00	\$330.00	\$2,500.00	\$5,000.00	\$480.00	\$960.00
14	DUMPSTER FOR MISCELLANEOUS DEBRIS DISPOSAL OFFSITE, INCLUDES CONCRETE, DEBRIS PILES, AND BRICK PILOT CHANNEL (TO BE USED ONLY AT THE WRITTEN DIRECTION OF THE ENGINEER), COMPLETE IN PLACE	EA	5	\$1,800.00	\$9,000.00	\$750.00	\$3,750.00	\$2,000.00	\$10,000.00
15	REMOVAL AND OFFSITE DISPOSAL OF EXISTING FENCE, ALL MATERIALS, COMPLETE IN PLACE	LF	7849	\$2.19	\$17,189.31	\$9.50	\$74,565.50	\$4.00	\$31,396.00
16	REMOVE AND REPLACE EXISTING CABLE MARKERS, SIGNS, AND BOX, ALL MATERIALS, ALL SIZES, CONTRACTOR TO COORDINATE WITH UTILITY COMPANY 48 HOURS IN ADVANCE, (TO BE USED ONLY AT THE WRITTEN DIRECTION OF THE ENGINEER), COMPLETE IN PLACE	EA	2	\$7,500.00	\$15,000.00	\$2,500.00	\$5,000.00	\$2,400.00	\$4,800.00
17	REMOVAL AND OFFSITE DISPOSAL OF EXISTING HAY SHED, ALL MATERIALS, ALL SIZES, COMPLETE IN PLACE	EA	1	\$15,900.00	\$15,900.00	\$10,000.00	\$10,000.00	\$5,000.00	\$5,000.00
18	TEMPORARY COFFER DAM, INCLUDES REMOVAL AND DISPOSAL OFF-SITE, COMPLETE IN PLACE	EA	1	\$21,690.00	\$21,690.00	\$10,000.00	\$10,000.00	\$13,200.00	\$13,200.00
19	REMOVAL AND OFFSITE DISPOSAL OF EXISTING POWER POLE, INCLUDES COORDINATION WITH CENTERPOINT ENERGY TO DEACTIVATE LINE, COMPLETE IN PLACE	EA	1	\$9,999.00	\$9,999.00	\$2,500.00	\$2,500.00	\$2,400.00	\$2,400.00
20	COST TO OVER-EXCAVATE POND A 2' FOR INSTALLATION OF CLAY LINER, INCLUDES EMBANKMENT, HAULING, COMPACTION TO 95% STANDARD PROCTOR DENSITY, STRIPPINGS, STOCKPILING OF STRIPPINGS, AND REAPPLYING OF STRIPPINGS, (TO BE USED ONLY AT THE WRITTEN DIRECTION OF ENGINEER), COMPLETE IN PLACE	CY	96667	\$2.79	\$269,700.93	\$2.35	\$227,167.45	\$2.00	\$193,334.00
MASS GRADING ITEMS SUBTOTAL:					\$2,590,295.22		\$2,627,701.55		\$2,792,235.20
DRAINAGE FACILITY ITEMS									
1	24-INCH RCP, STORM SEWER, ASTM C-76, CLASS III, ALL DEPTHS, INCLUDES SCORING OF PIPE, BEDDING AND BACKFILL, COMPLETE IN PLACE	LF	39	\$102.57	\$4,000.23	\$135.25	\$5,274.75	\$182.00	\$7,098.00
2	42-INCH RCP, STORM SEWER, ASTM C-76, CLASS III, ALL DEPTHS, INCLUDES SCORING OF PIPE, BEDDING AND BACKFILL, COMPLETE IN PLACE	LF	123	\$238.71	\$29,361.33	\$269.40	\$33,136.20	\$315.00	\$38,745.00
3	48-INCH RCP, STORM SEWER, ASTM C-76, CLASS III, ALL DEPTHS, INCLUDES SCORING OF PIPE, BEDDING AND BACKFILL, COMPLETE IN PLACE	LF	47	\$275.79	\$12,962.13	\$309.75	\$14,558.25	\$403.00	\$18,941.00
4	66-INCH RCP, STORM SEWER, ASTM C-76, CLASS III, ALL DEPTHS, INCLUDES SCORING OF PIPE, BEDDING AND BACKFILL, COMPLETE IN PLACE	LF	86	\$583.17	\$50,152.62	\$606.50	\$52,159.00	\$728.00	\$62,608.00
5	72-INCH RCP, STORM SEWER, ASTM C-76, CLASS III, ALL DEPTHS, INCLUDES SCORING OF PIPE, BEDDING AND BACKFILL, COMPLETE IN PLACE	LF	81	\$700.89	\$56,772.09	\$690.55	\$55,934.55	\$818.00	\$66,258.00
6	4'X4' RCB, STORM BOX CULVERT, ASTM C-1433, ALL DEPTHS, BEDDING AND BACKFILL, COMPLETE IN PLACE	LF	213	\$452.37	\$96,354.81	\$495.10	\$105,456.30	\$581.00	\$123,753.00
7	STANDARD TYPE 'C' MANHOLE FOR 42" STORM SEWERS AND SMALLER WITH TYPE 'E' INLET TOP (OPEN ALL SIDES), ALL DEPTHS, INCLUDES ADJUSTMENTS, COMPLETE IN PLACE	EA	1	\$7,086.00	\$7,086.00	\$12,500.00	\$12,500.00	\$6,700.00	\$6,700.00

BID TABULATION FOR:

BID OPENING DATE:
BID OPENING LOCATION:
TABULATION BY:
TABULATION DATE:
LJA JOB NO.

CONSTRUCTION OF HARVEST GREEN DRAINAGE, DETENTION AND MASS GRADING PHASE VII
 FORT BEND COUNTY MUNICIPAL UTILITY DISTRICT NO. 134F
 CITY OF HOUSTON E.T.J., FORT BEND COUNTY, TEXAS
 SEPTEMBER 19, 2024
 LJA ENGINEERING, INC.
 E. MURPHY
 SEPTEMBER 19, 2024
 2659-2112 (9.2)

ITEM	DESCRIPTION	UNIT	QTY	1) LONGHORN EXCAVATORS, INC.		2) HARRIS CONSTRUCTION COMPANY, LLC		3) SONORA CONSTRUCTION	
				UNIT COST	TOTAL COST	UNIT COST	TOTAL COST	UNIT COST	TOTAL COST
8	STANDARD TYPE 'C' MANHOLE FOR 48" STORM SEWERS AND LARGER WITH TYPE 'E' INLET TOP (OPEN ALL SIDES), ALL DEPTHS, INCLUDES ADJUSTMENTS, COMPLETE IN PLACE	EA	3	\$10,029.00	\$30,087.00	\$19,250.00	\$57,750.00	\$14,630.00	\$43,890.00
9	STANDARD TYPE 'C' MANHOLE FOR 42" STORM SEWERS AND SMALLER, ALL DEPTHS, INCLUDES ADJUSTMENTS, COMPLETE IN PLACE	EA	1	\$7,086.00	\$7,086.00	\$10,195.00	\$10,195.00	\$9,000.00	\$9,000.00
10	BACKSLOPE INTERCEPTOR STRUCTURES FOR POND A, INCLUDES 24" CORRUGATED METAL PIPE, 24" WIDE BAND COUPLER, FABRICATED ELBOW, REINFORCED CONCRETE SLOPE PROTECTION FOR BACKSLOPE SWALE AS SHOWN IN DETAIL, REINFORCED CONCRETE SLOPE PAVING FOR THE OUTFALL, 18" THICK RIP RAP GRADATION NO. 2, AND CONCRETE LINED DAYLIGHTING SWALE FROM OUTFALL TO DETENTION POND PILOT CHANNEL, COMPLETE IN PLACE	EA	13	\$13,626.00	\$177,138.00	\$11,945.00	\$155,285.00	\$13,300.00	\$172,900.00
11	4" REINFORCED CONCRETE SLOPE PAVING, INCLUDES 2 FOOT TOE WALL ON ALL SIDES, COMPLETE IN PLACE	SY	520	\$136.26	\$70,855.20	\$107.00	\$55,640.00	\$144.00	\$74,880.00
12	18" THICK RIP RAP GRADATION NO. 2, INCLUDES GEOTEXTILE FABRIC OF MIRAFI-600 OR APPROVED EQUAL, COMPLETE IN PLACE	SY	64	\$130.80	\$8,371.20	\$165.00	\$10,560.00	\$132.00	\$8,448.00
13	STANDARD TXDOT WINGWALL STRUCTURE, INCLUDES SCORING OF PIPE, REINFORCED CONCRETE SLOPE PAVING AS SHOWN ON PLAN AND PROFILES & NECESSARY HEADWALL, COMPLETE IN PLACE	EA	2	\$23,436.00	\$46,872.00	\$44,115.00	\$88,230.00	\$15,600.00	\$31,200.00
14	TRENCH SAFETY SYSTEM, ALL DEPTHS, COMPLETE IN PLACE	LF	589	\$1.11	\$653.79	\$2.00	\$1,178.00	\$2.00	\$1,178.00
15	ADDITIONAL COST FOR BEDDING AND BACKFILL FOR UNSATISFACTORY SOIL CONDITIONS (WET SAND), (TO BE USED ONLY AT THE WRITTEN DIRECTION OF THE ENGINEER), COMPLETE IN PLACE	LF	589	\$27.27	\$16,062.03	\$25.00	\$14,725.00	\$25.00	\$14,725.00
16	DEWATERING (GROUNDWATER CONTROL), INCLUDES CONVENTIONAL VACUUM-TYPE WELL POINTS, INTERNAL SUMPS AND PUMPS, OR ANY TYPE OF PUMPING AS NECESSARY TO COMPLETE THE CONSTRUCTION OF THE PROJECT, (TO BE USED ONLY AT THE WRITTEN DIRECTION OF THE ENGINEER), COMPLETE IN PLACE	LF	589	\$27.27	\$16,062.03	\$25.00	\$14,725.00	\$25.00	\$14,725.00
DRAINAGE FACILITY ITEMS SUBTOTAL:					\$629,876.46		\$687,307.05		\$695,049.00
MISCELLANEOUS ITEMS									
1	CEMENT STABILIZED SAND, 1.5 SACKS OF CEMENT PER CUBIC YARD OF MIX, (TO BE USED ONLY AT THE WRITTEN DIRECTION OF THE ENGINEER), COMPLETE IN PLACE	TON	1	\$21.81	\$21.81	\$20.00	\$20.00	\$50.00	\$50.00
2	REINFORCED FILTER FABRIC FENCE, COMPLETE IN PLACE	LF	11450	\$2.73	\$31,258.50	\$2.50	\$28,625.00	\$1.50	\$17,175.00
3	STAGE II INLET PROTECTION BARRIERS (BURLAP BAG BARRIER), COMPLETE IN PLACE	EA	8	\$192.00	\$1,536.00	\$50.00	\$400.00	\$50.00	\$400.00
4	CONSTRUCT, MAINTAIN AND REMOVE STABILIZED CONSTRUCTION EXIT, COMPLETE IN PLACE	EA	1	\$3,690.00	\$3,690.00	\$2,500.00	\$2,500.00	\$2,500.00	\$2,500.00
5	CONSTRUCT, MAINTAIN AND REMOVE CONCRETE TRUCK WASHOUT, COMPLETE IN PLACE	EA	1	\$3,690.00	\$3,690.00	\$1,000.00	\$1,000.00	\$500.00	\$500.00
6	UTILITY SPOILS (COMPACTED TO 95% STANDARD PROCTOR DENSITY) TO BE USED ON-SITE, INCLUDES HAULING, PLACEMENT AND COMPACTION, COMPLETE IN PLACE	LS	1	\$4,500.00	\$4,500.00	\$7,995.00	\$7,995.00	\$7,350.00	\$7,350.00
7	EXTRA COST FOR IMPORT OF CLAY FROM OFF-SITE SOURCE TO BE USED FOR 2' CLAY LINER, CLAY TO BE NONDISPERSIVE WITH A MINIMUM PI OF 20 AND MAXIMUM OF 35, INCLUDES HAULING, PLACING, BENCHING, AND COMPACTION OF MATERIAL TO 95% STANDARD PROCTOR DENSITY AND OVER-EXCAVATION (2' MINIMUM DEPTH) OF EXISTING SOILS, COMPLETE IN PLACE	CY	10000	\$24.69	\$246,900.00	\$18.50	\$185,000.00	\$5.00	\$50,000.00

BID TABULATION FOR:

BID OPENING DATE:
BID OPENING LOCATION:
TABULATION BY:
TABULATION DATE:
LJA JOB NO.

CONSTRUCTION OF HARVEST GREEN DRAINAGE, DETENTION AND MASS GRADING PHASE VII
 FORT BEND COUNTY MUNICIPAL UTILITY DISTRICT NO. 134F
 CITY OF HOUSTON E.T.J., FORT BEND COUNTY, TEXAS
 SEPTEMBER 19, 2024
 LJA ENGINEERING, INC.
 E. MURPHY
 SEPTEMBER 19, 2024
 2659-2112 (9.2)

ITEM	DESCRIPTION	UNIT	QTY	1) LONGHORN EXCAVATORS, INC.		2) HARRIS CONSTRUCTION COMPANY, LLC		3) SONORA CONSTRUCTION	
				UNIT COST	TOTAL COST	UNIT COST	TOTAL COST	UNIT COST	TOTAL COST
8	STORM WATER POLLUTION PREVENTION PLAN COMPLIANCE AND INSPECTIONS, COMPLETE IN PLACE	LS	1	\$6,900.00	\$6,900.00	\$2,000.00	\$2,000.00	\$1,000.00	\$1,000.00
9	LOW WATER CROSSING AT OYSTER CREEK, INCLUDES TWO 102" DIAMETER STEEL PIPES WHICH WILL BE ONSITE AND PROVIDED BY OWNER, CONTRACTOR RESPONSIBLE FOR HAULING TO LOW WATER CROSSING LOCATION NOT MORE THAN 2,500 FEET AWAY, BEDDING AND BACKFILL, 2' EMBANKMENT ABOVE TOP OF PIPE COMPACTED TO 95% STANDARD PROCTOR DENSITY WITH MAXIMUM 8" LIFTS, TEMPORARY COFFERDAMS, MAINTENANCE DURING PROJECT AND REMOVAL AT THE COMPLETION OF THE PROJECT, COMPLETE IN PLACE	LS	1	\$24,900.00	\$24,900.00	\$32,465.00	\$32,465.00	\$16,750.00	\$16,750.00
10	CLEARING AND GRUBBING, INCLUDING TREES, VEGETATION, ANY MISCELLANEOUS STRUCTURES, ROOT RAKING AND BACK DRAGGING AND HAULING DEBRIS OFFSITE, COMPLETE IN PLACE	AC	30	\$3,489.00	\$104,670.00	\$4,625.00	\$138,750.00	\$10,400.00	\$312,000.00
11	TEMPORARY TRAFFIC CONTROL DEVICES, INCLUDING ALL TRAFFIC BUTTONS, PAVEMENT STRIPING, STREET SIGNS, AND TRAFFIC SIGNS, COMPLETE IN PLACE	LS	1	\$21,000.00	\$21,000.00	\$5,000.00	\$5,000.00	\$1,200.00	\$1,200.00
MISCELLANEOUS ITEMS SUBTOTAL:					\$449,066.31	\$403,755.00	\$408,925.00		
<u>ALTERNATE ITEMS #1</u>									
1	HAUL OFF-SITE AND DISPOSE OF MATERIAL GENERATED FROM EXCAVATION OF FUTURE POND A2, POND A3, POND B1, POND B2, FILL AREA 1, FILL AREA 2, AND FILL AREA 3 TO BE USED IN LIEU OF MASS GRADING ITEM NO. 2, COMPLETE IN PLACE	CY	448537	\$27.00	\$12,110,499.00	\$20.00	\$8,970,740.00	\$35.00	\$15,698,795.00
ALTERNATE ITEMS #1 SUBTOTAL:					\$12,110,499.00	\$8,970,740.00	\$15,698,795.00		
<u>BIDDING SUMMARY</u>									
SUBTOTAL MASS GRADING ITEMS					\$2,590,295.22	\$2,627,701.55	\$2,792,235.20		
SUBTOTAL DRAINAGE FACILITY ITEMS					\$629,876.46	\$687,307.05	\$695,049.00		
SUBTOTAL MISCELLANEOUS ITEMS					\$449,066.31	\$403,755.00	\$408,925.00		
TOTAL AMOUNT BASE BID					\$3,669,237.99	\$3,718,763.60	\$3,896,209.20		
<u>ALTERNATE ITEMS #1</u>									
TOTAL AMOUNT BASE BID					\$3,669,237.99	\$3,718,763.60	\$3,896,209.20		
DEDUCT MASS GRADING ITEMS ITEM NO.2					-\$915,015.48	-\$627,951.80	-\$1,121,342.50		
SUBTOTAL ALTERNATE ITEMS #1					\$12,110,499.00	\$8,970,740.00	\$15,698,795.00		
TOTAL AMOUNT INCLUDING ALTERNATE ITEMS #1					\$14,864,721.51	\$12,061,551.80	\$18,473,661.70		

BID TABULATION FOR:

CONSTRUCTION OF HARVEST GREEN DRAINAGE, DETENTION AND MASS GRADING PHASE VII
 FORT BEND COUNTY MUNICIPAL UTILITY DISTRICT NO. 134F
 CITY OF HOUSTON E.T.J., FORT BEND COUNTY, TEXAS
 SEPTEMBER 19, 2024
 LJA ENGINEERING, INC.
 E. MURPHY
 SEPTEMBER 19, 2024
 2659-2112 (9.2)

BID OPENING DATE:
BID OPENING LOCATION:
TABULATION BY:
TABULATION DATE:
LJA JOB NO.

ITEM	DESCRIPTION	UNIT	QTY	UNIT COST	TOTAL COST
4) R CONSTRUCTION CIVIL, LLC					
MASS GRADING ITEMS					
1	EXCAVATION OF POND A, EXCAVATION OF FILL AREAS, RIGHT OF WAY SWALES, V-BOTTOM SWALES, AND STRIPPINGS, INCLUDES THE USE OF WHEELED EQUIPMENT FOR EXCAVATION OF WETLAND AREAS AS SHOWN ON PLANS, STOCKPILING OF STRIPPINGS, AND REAPPLYING STRIPPINGS TO FINAL GRADED AREAS, COMPLETE IN PLACE	CY	448537	\$1.80	\$807,366.60
2	EMBANKMENT OF FILL AREA 1, FILL AREA 2, INCLUDES RIGHT OF WAY SWALES, V-BOTTOM SWALES, SITE AND FILL AREAS, INCLUDES HAULING, COMPACTION TO 95% STANDARD PROCTOR DENSITY, STRIPPING, STOCKPILING OF STRIPPINGS, DEMUCKING OF EXISTING SWALES AND PONDS IN FILL AREA AND REAPPLYING OF STRIPPINGS, COMPLETE IN PLACE	CY	448537	\$1.80	\$807,366.60
3	INSTALLATION OF 2' THICK CLAY LINER FOR POND A, FROM BOTTOM OF POND TO 2 FEET ABOVE NORMAL POOL ELEVATION, MANIPULATION OF EXISTING CLAY MATERIAL WITHIN POND BOTTOM AND SIDES FOR CONSTRUCTION OF CLAY LINER, MOISTURE CONDITIONING BY SCARIFYING TO A MINIMUM DEPTH OF 24", BENCHED AND COMPACTED TO 95% STANDARD PROCTOR DENSITY, HAULING, PLACING, AND COMPACTING CLAY MATERIAL, ALL FILL PLACED SHALL BE NON-DISPERSIVE CLAY MATERIAL WITH A MINIMUM PI OF 20 AND MAXIMUM OF 35, AND COMPACTION TO 95% STANDARD PROCTOR DENSITY, COMPLETE IN PLACE	SY	145000	\$4.50	\$652,500.00
4	DRY APPLICATION SEEDING OF DETENTION POND A FROM HIGH BANK TO NORMAL POOL ELEVATION, INCLUDES SEEDING, MOWING, AND WATERING TO ACHIEVE 90% HOMOGENEOUS VEGETATION TO ACCEPT PROJECT FOR FINAL PAYMENT, COMPLETE IN PLACE	AC	11	\$2,200.00	\$24,200.00
5	BROADCAST SEEDING OF FILL AREA 1, FILL AREA 2, 20' BOTTOM WIDTH SWALES WITHIN FUTURE RIGHT-OF-WAY, AND ALL REMAINING DISTURBED AREAS WITHIN PROJECT AREA, INCLUDES SEEDING, MOWING, AND WATERING TO ACHIEVE 90% HOMOGENEOUS VEGETATION TO ACCEPT PROJECT FOR FINAL PAYMENT, COMPLETE IN PLACE	AC	67	\$700.00	\$46,900.00
6	HYDROMULCH SEEDING OF INTERCEPTOR SWALES AND MAINTENANCE BERMS, GRADING DOWN TO NATURAL GROUND ALONG THE BOUNDARY, AND 4' BOTTOM WIDTH SWALE, INCLUDES SEEDING, MOWING, AND WATERING TO ACHIEVE 90% HOMOGENEOUS VEGETATION TO ACCEPT PROJECT FOR FINAL PAYMENT, COMPLETE IN PLACE	AC	7	\$1,600.00	\$11,200.00
7	DEWATERING (GROUNDWATER CONTROL) TO COMPLETE THE CONSTRUCTION OF POND A, INCLUDES CONVENTIONAL VACUUM-TYPE WELL POINTS, INTERNAL SUMPS AND PUMPS, OR ANY TYPE OF PUMPING NECESSARY TO COMPLETE THE CONSTRUCTION OF THE PROJECT, (TO BE USED ONLY AT THE WRITTEN DIRECTION OF THE ENGINEER), COMPLETE IN PLACE	AC	42	\$1,500.00	\$63,000.00
8	SURFACE WATER CONTROL, INCLUDES PUMPING REQUIRED TO CONSTRUCT POND A, AND COMPLETE ENTIRE PROJECT, (TO BE USED ONLY AT THE WRITTEN DIRECTION OF THE ENGINEER), COMPLETE IN PLACE	LS	1	\$50,000.00	\$50,000.00
9	CONSTRUCTION STAKING TO BE PERFORMED BY GBI SURVEY, PLEASE CONTACT KYLE KACAL AT 281.499.4539, INCLUDES STAKING OFFSETS TO FUTURE POND A, HIGH BANKS WITH CUT TO TOE OF POND NOT TO EXCEED 100', STAKING OF RCP, BACK SLOPE INTERCEPTOR STRUCTURES, AND ANY REMAINING STRUCTURES, COMPLETE IN PLACE	LS	1	\$29,100.00	\$29,100.00
10	AS-BUILT SURVEY OF FILL AREA 1, FILL AREA 2, POND A, AND ALL SWALES AND BACKSLOPE INTERCEPTOR SWALES, CONTRACTOR'S SURVEYOR TO PROVIDE TOPOGRAPHIC SURVEY SEALED BY A TEXAS-REGISTERED SURVEYOR, GRID SPACING SHALL BE 100' MAXIMUM AND INCLUDES ALL HIGH BANKS, BACK OF LOTS, GRADE BREAKS, FLOW LINES, GRADING FEATURES, UTILITY FLOWLINES, AND STRUCTURES IN A 3D CAD FILE FORMAT, TO BE PERFORMED BY GBI SURVEY, PLEASE CONTACT KYLE KACAL AT 281.499.4539, COMPLETE IN PLACE	LS	1	\$20,900.00	\$20,900.00

BID TABULATION FOR:

BID OPENING DATE:
BID OPENING LOCATION:
TABULATION BY:
TABULATION DATE:
LJA JOB NO.

CONSTRUCTION OF HARVEST GREEN DRAINAGE, DETENTION AND MASS GRADING PHASE VII
 FORT BEND COUNTY MUNICIPAL UTILITY DISTRICT NO. 134F
 CITY OF HOUSTON E.T.J., FORT BEND COUNTY, TEXAS
 SEPTEMBER 19, 2024
 LJA ENGINEERING, INC.
 E. MURPHY
 SEPTEMBER 19, 2024
 2659-2112 (9.2)

4) R CONSTRUCTION CIVIL, LLC					
ITEM	DESCRIPTION	UNIT	QTY	UNIT COST	TOTAL COST
11	EXCAVATION OF INTERCEPTOR SWALES FOR POND A, INCLUDES STRIPPING, STOCKPILING OF STRIPPINGS, AND REAPPLYING STRIPPINGS TO FINAL GRADED AREAS, COMPLETE IN PLACE	LF	8555	\$3.00	\$25,665.00
12	REMOVAL AND OFFSITE DISPOSAL OF EXISTING PIPES, ALL SIZES, ALL DEPTHS, ALL MATERIALS, INCLUDES REMOVAL OF SLOPE PAVING, RIP RAP, SAFETY END TREATMENTS AND APPURTENANCES, COMPLETE IN PLACE	LF	175	\$30.00	\$5,250.00
13	REMOVE AND REPLACE EXISTING IRRIGATION GATE VALVES, ALL SIZES, ALL DEPTHS, ALL MATERIALS, INCLUDES APPURTENANCES, (TO BE USED ONLY AT THE WRITTEN DIRECTION OF THE ENGINEER), COMPLETE IN PLACE	EA	2	\$1,000.00	\$2,000.00
14	DUMPSTER FOR MISCELLANEOUS DEBRIS DISPOSAL OFFSITE, INCLUDES CONCRETE, DEBRIS PILES, AND BRICK PILOT CHANNEL (TO BE USED ONLY AT THE WRITTEN DIRECTION OF THE ENGINEER), COMPLETE IN PLACE	EA	5	\$1,500.00	\$7,500.00
15	REMOVAL AND OFFSITE DISPOSAL OF EXISTING FENCE, ALL MATERIALS, COMPLETE IN PLACE	LF	7849	\$1.00	\$7,849.00
16	REMOVE AND REPLACE EXISTING CABLE MARKERS, SIGNS, AND BOX, ALL MATERIALS, ALL SIZES, CONTRACTOR TO COORDINATE WITH UTILITY COMPANY 48 HOURS IN ADVANCE, (TO BE USED ONLY AT THE WRITTEN DIRECTION OF THE ENGINEER), COMPLETE IN PLACE	EA	2	\$200.00	\$400.00
17	REMOVAL AND OFFSITE DISPOSAL OF EXISTING HAY SHED, ALL MATERIALS, ALL SIZES, COMPLETE IN PLACE	EA	1	\$5,000.00	\$5,000.00
18	TEMPORARY COFFER DAM, INCLUDES REMOVAL AND DISPOSAL OFF-SITE, COMPLETE IN PLACE	EA	1	\$5,500.00	\$5,500.00
19	REMOVAL AND OFFSITE DISPOSAL OF EXISTING POWER POLE, INCLUDES COORDINATION WITH CENTERPOINT ENERGY TO DEACTIVATE LINE, COMPLETE IN PLACE	EA	1	\$400.00	\$400.00
20	COST TO OVER-EXCAVATE POND A 2' FOR INSTALLATION OF CLAY LINER, INCLUDES EMBANKMENT, HAULING, COMPACTION TO 95% STANDARD PROCTOR DENSITY, STRIPPINGS, STOCKPILING OF STRIPPINGS, AND REAPPLYING OF STRIPPINGS, (TO BE USED ONLY AT THE WRITTEN DIRECTION OF ENGINEER), COMPLETE IN PLACE	CY	96667	\$3.50	\$338,334.50
MASS GRADING ITEMS SUBTOTAL:					\$2,910,431.70

DRAINAGE FACILITY ITEMS

1	24-INCH RCP, STORM SEWER, ASTM C-76, CLASS III, ALL DEPTHS, INCLUDES SCORING OF PIPE, BEDDING AND BACKFILL, COMPLETE IN PLACE	LF	39	\$100.00	\$3,900.00
2	42-INCH RCP, STORM SEWER, ASTM C-76, CLASS III, ALL DEPTHS, INCLUDES SCORING OF PIPE, BEDDING AND BACKFILL, COMPLETE IN PLACE	LF	123	\$230.00	\$28,290.00
3	48-INCH RCP, STORM SEWER, ASTM C-76, CLASS III, ALL DEPTHS, INCLUDES SCORING OF PIPE, BEDDING AND BACKFILL, COMPLETE IN PLACE	LF	47	\$265.00	\$12,455.00
4	66-INCH RCP, STORM SEWER, ASTM C-76, CLASS III, ALL DEPTHS, INCLUDES SCORING OF PIPE, BEDDING AND BACKFILL, COMPLETE IN PLACE	LF	86	\$540.00	\$46,440.00
5	72-INCH RCP, STORM SEWER, ASTM C-76, CLASS III, ALL DEPTHS, INCLUDES SCORING OF PIPE, BEDDING AND BACKFILL, COMPLETE IN PLACE	LF	81	\$640.00	\$51,840.00
6	4'X4' RCB, STORM BOX CULVERT, ASTM C-1433, ALL DEPTHS, BEDDING AND BACKFILL, COMPLETE IN PLACE	LF	213	\$390.00	\$83,070.00
7	STANDARD TYPE 'C' MANHOLE FOR 42" STORM SEWERS AND SMALLER WITH TYPE 'E' INLET TOP (OPEN ALL SIDES), ALL DEPTHS, INCLUDES ADJUSTMENTS, COMPLETE IN PLACE	EA	1	\$5,000.00	\$5,000.00

BID TABULATION FOR:

CONSTRUCTION OF HARVEST GREEN DRAINAGE, DETENTION AND MASS GRADING PHASE VII
 FORT BEND COUNTY MUNICIPAL UTILITY DISTRICT NO. 134F
 CITY OF HOUSTON E.T.J., FORT BEND COUNTY, TEXAS
 SEPTEMBER 19, 2024
 LJA ENGINEERING, INC.
 E. MURPHY
 SEPTEMBER 19, 2024
 2659-2112 (9.2)

BID OPENING DATE:
BID OPENING LOCATION:
TABULATION BY:
TABULATION DATE:
LJA JOB NO.

4) R CONSTRUCTION CIVIL, LLC

ITEM	DESCRIPTION	UNIT	QTY	UNIT COST	TOTAL COST
8	STANDARD TYPE 'C' MANHOLE FOR 48" STORM SEWERS AND LARGER WITH TYPE 'E' INLET TOP (OPEN ALL SIDES), ALL DEPTHS, INCLUDES ADJUSTMENTS, COMPLETE IN PLACE	EA	3	\$13,000.00	\$39,000.00
9	STANDARD TYPE 'C' MANHOLE FOR 42" STORM SEWERS AND SMALLER, ALL DEPTHS, INCLUDES ADJUSTMENTS, COMPLETE IN PLACE	EA	1	\$4,300.00	\$4,300.00
10	BACKSLOPE INTERCEPTOR STRUCTURES FOR POND A, INCLUDES 24" CORRUGATED METAL PIPE, 24" WIDE BAND COUPLER, FABRICATED ELBOW, REINFORCED CONCRETE SLOPE PROTECTION FOR BACKSLOPE SWALE AS SHOWN IN DETAIL, REINFORCED CONCRETE SLOPE PAVING FOR THE OUTFALL, 18" THICK RIP RAP GRADATION NO. 2, AND CONCRETE LINED DAYLIGHTING SWALE FROM OUTFALL TO DETENTION POND PILOT CHANNEL, COMPLETE IN PLACE	EA	13	\$12,500.00	\$162,500.00
11	4" REINFORCED CONCRETE SLOPE PAVING, INCLUDES 2 FOOT TOE WALL ON ALL SIDES, COMPLETE IN PLACE	SY	520	\$155.00	\$80,600.00
12	18" THICK RIP RAP GRADATION NO. 2, INCLUDES GEOTEXTILE FABRIC OF MIRAFI-600 OR APPROVED EQUAL, COMPLETE IN PLACE	SY	64	\$165.00	\$10,560.00
13	STANDARD TXDOT WINGWALL STRUCTURE, INCLUDES SCORING OF PIPE, REINFORCED CONCRETE SLOPE PAVING AS SHOWN ON PLAN AND PROFILES & NECESSARY HEADWALL, COMPLETE IN PLACE	EA	2	\$76,000.00	\$152,000.00
14	TRENCH SAFETY SYSTEM, ALL DEPTHS, COMPLETE IN PLACE	LF	589	\$0.10	\$58.90
15	ADDITIONAL COST FOR BEDDING AND BACKFILL FOR UNSATISFACTORY SOIL CONDITIONS (WET SAND), (TO BE USED ONLY AT THE WRITTEN DIRECTION OF THE ENGINEER), COMPLETE IN PLACE	LF	589	\$25.00	\$14,725.00
16	DEWATERING (GROUNDWATER CONTROL), INCLUDES CONVENTIONAL VACUUM-TYPE WELL POINTS, INTERNAL SUMPS AND PUMPS, OR ANY TYPE OF PUMPING AS NECESSARY TO COMPLETE THE CONSTRUCTION OF THE PROJECT, (TO BE USED ONLY AT THE WRITTEN DIRECTION OF THE ENGINEER), COMPLETE IN PLACE	LF	589	\$30.00	\$17,670.00
DRAINAGE FACILITY ITEMS SUBTOTAL:					\$712,408.90
MISCELLANEOUS ITEMS					
1	CEMENT STABILIZED SAND, 1.5 SACKS OF CEMENT PER CUBIC YARD OF MIX, (TO BE USED ONLY AT THE WRITTEN DIRECTION OF THE ENGINEER), COMPLETE IN PLACE	TON	1	\$50.00	\$50.00
2	REINFORCED FILTER FABRIC FENCE, COMPLETE IN PLACE	LF	11450	\$2.40	\$27,480.00
3	STAGE II INLET PROTECTION BARRIERS (BURLAP BAG BARRIER), COMPLETE IN PLACE	EA	8	\$60.00	\$480.00
4	CONSTRUCT, MAINTAIN AND REMOVE STABILIZED CONSTRUCTION EXIT, COMPLETE IN PLACE	EA	1	\$1,600.00	\$1,600.00
5	CONSTRUCT, MAINTAIN AND REMOVE CONCRETE TRUCK WASHOUT, COMPLETE IN PLACE	EA	1	\$550.00	\$550.00
6	UTILITY SPOILS (COMPACTED TO 95% STANDARD PROCTOR DENSITY) TO BE USED ON-SITE, INCLUDES HAULING, PLACEMENT AND COMPACTION, COMPLETE IN PLACE	LS	1	\$10,000.00	\$10,000.00
7	EXTRA COST FOR IMPORT OF CLAY FROM OFF-SITE SOURCE TO BE USED FOR 2' CLAY LINER, CLAY TO BE NONDISPERSIVE WITH A MINIMUM PI OF 20 AND MAXIMUM OF 35, INCLUDES HAULING, PLACING, BENCHING, AND COMPACTION OF MATERIAL TO 95% STANDARD PROCTOR DENSITY AND OVER-EXCAVATION (2' MINIMUM DEPTH) OF EXISTING SOILS, COMPLETE IN PLACE	CY	10000	\$22.50	\$225,000.00

BID TABULATION FOR:

BID OPENING DATE:
BID OPENING LOCATION:
TABULATION BY:
TABULATION DATE:
LJA JOB NO.

CONSTRUCTION OF HARVEST GREEN DRAINAGE, DETENTION AND MASS GRADING PHASE VII
 FORT BEND COUNTY MUNICIPAL UTILITY DISTRICT NO. 134F
 CITY OF HOUSTON E.T.J., FORT BEND COUNTY, TEXAS
 SEPTEMBER 19, 2024
 LJA ENGINEERING, INC.
 E. MURPHY
 SEPTEMBER 19, 2024
 2659-2112 (9.2)

4) R CONSTRUCTION CIVIL, LLC					
ITEM	DESCRIPTION	UNIT	QTY	UNIT COST	TOTAL COST
8	STORM WATER POLLUTION PREVENTION PLAN COMPLIANCE AND INSPECTIONS, COMPLETE IN PLACE	LS	1	\$3,500.00	\$3,500.00
9	LOW WATER CROSSING AT OYSTER CREEK, INCLUDES TWO 102" DIAMETER STEEL PIPES WHICH WILL BE ONSITE AND PROVIDED BY OWNER, CONTRACTOR RESPONSIBLE FOR HAULING TO LOW WATER CROSSING LOCATION NOT MORE THAN 2,500 FEET AWAY, BEDDING AND BACKFILL, 2' EMBANKMENT ABOVE TOP OF PIPE COMPACTED TO 95% STANDARD PROCTOR DENSITY WITH MAXIMUM 8" LIFTS, TEMPORARY COFFERDAMS, MAINTENANCE DURING PROJECT AND REMOVAL AT THE COMPLETION OF THE PROJECT, COMPLETE IN PLACE	LS	1	\$20,000.00	\$20,000.00
10	CLEARING AND GRUBBING, INCLUDING TREES, VEGETATION, ANY MISCELLANEOUS STRUCTURES, ROOT RAKING AND BACK DRAGGING AND HAULING DEBRIS OFFSITE, COMPLETE IN PLACE	AC	30	\$2,500.00	\$75,000.00
11	TEMPORARY TRAFFIC CONTROL DEVICES, INCLUDING ALL TRAFFIC BUTTONS, PAVEMENT STRIPING, STREET SIGNS, AND TRAFFIC SIGNS, COMPLETE IN PLACE	LS	1	\$8,500.00	\$8,500.00
MISCELLANEOUS ITEMS SUBTOTAL:					\$372,160.00
ALTERNATE ITEMS #1					
1	HAUL OFF-SITE AND DISPOSE OF MATERIAL GENERATED FROM EXCAVATION OF FUTURE POND A2, POND A3, POND B1, POND B2, FILL AREA 1, FILL AREA 2, AND FILL AREA 3 TO BE USED IN LIEU OF MASS GRADING ITEM NO. 2, COMPLETE IN PLACE	CY	448537	\$25.00	\$11,213,425.00
ALTERNATE ITEMS #1 SUBTOTAL:					\$11,213,425.00
BIDDING SUMMARY					
SUBTOTAL MASS GRADING ITEMS					\$2,910,431.70
SUBTOTAL DRAINAGE FACILITY ITEMS					\$712,408.90
SUBTOTAL MISCELLANEOUS ITEMS					\$372,160.00
TOTAL AMOUNT BASE BID					\$3,995,000.60
ALTERNATE ITEMS #1					
TOTAL AMOUNT BASE BID					\$3,995,000.60
DEDUCT MASS GRADING ITEMS ITEM NO.2					-\$807,366.60
SUBTOTAL ALTERNATE ITEMS #1					\$11,213,425.00
TOTAL AMOUNT INCLUDING ALTERNATE ITEMS #1					\$14,401,059.00